

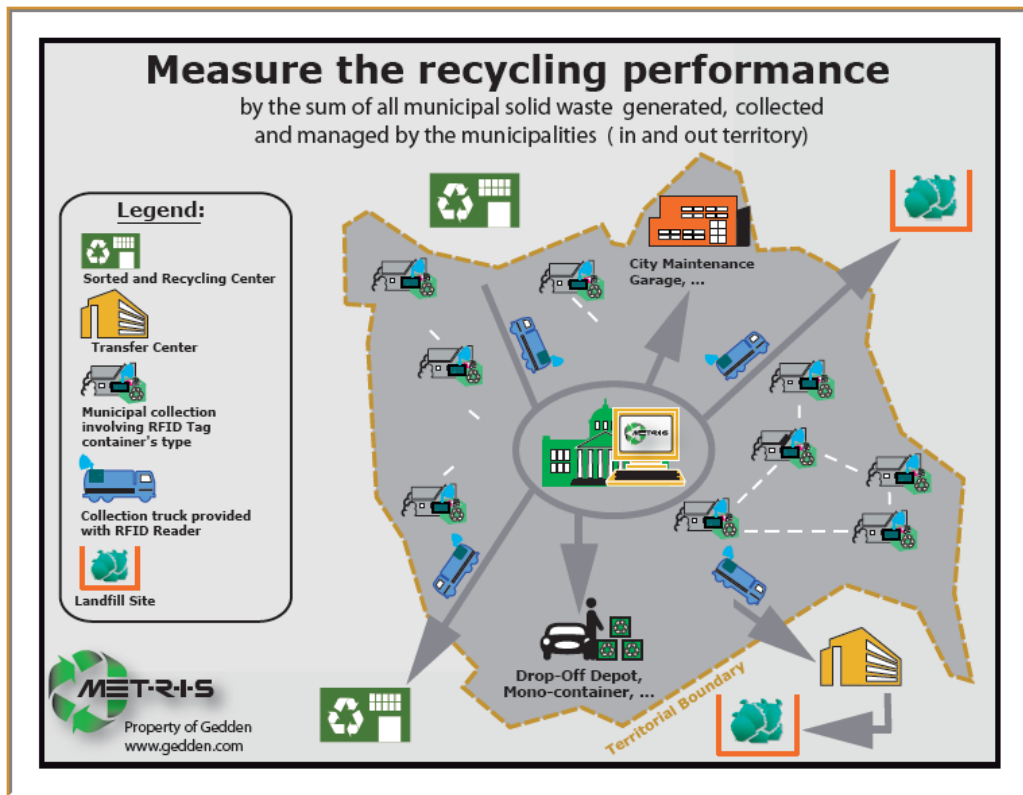
# MET-R-I-S

The basis of Gedden’s solutions is to provide « air miles » to those who are advocate to sustainable development: citizens, industries, municipalities and governments. Similar to Gedden’s other solutions, MET-R-I-S is dedicated to the gathering of valuable ground information. MET-R-I-S measures the environmental performance that can then be exchanged for \$\$\$ and permitting a faster ROI to our customer.



MET-R-I-S is dedicated to the municipal market. It collects ground information - citizen by citizen - by using a combination of proven technologies such as RFID, data’s wireless transmission networks. It also transforms the ground data into ROI.

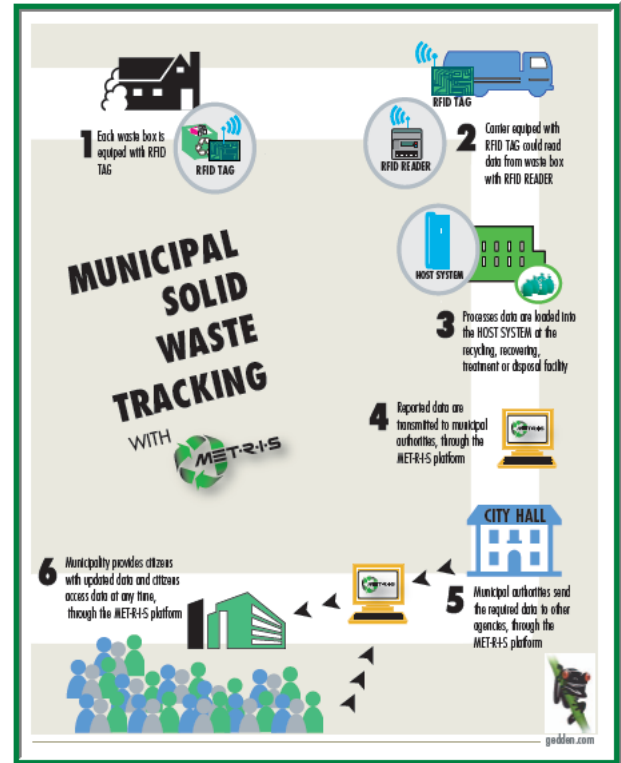
1. **ROI** in less than 5 years for cities
2. **Measure** more fees
3. **Productivity** gain
4. **Carbon Credits** identification
5. **Rewards** for the performing and participating citizens



**Recycling:** activity to manage waste (*domestic or industrial*) in a way that they are re-introduced in a new production cycle, for example waste paper to produce new paper and waste metal to produce new metal.

## General Solution' features

1. **Equipment, including maintenance and updates:** RFID, scanner and modem to measure the management performance from home collection box to final destination site;
2. **Cellular network:** to carry the information, in real time from door's collection box and MSW management site to the ASP's municipality account;
3. **Server hosting:** to provide an ASP solution to the municipality;
4. **All professional services:** to give all the support required by the solution;
5. **Application:** to organize all information in a logical and an operational way. MET-R-I-S is a Gedden's solution, under license agreements.



### General features

- ASP or Intranet mode;
- Multi-user/profile support;
- Multi languages;
- Multi jurisdictions, or countries for the metadata and regulated information required;
- Connectivity, as a network's community, with all stakeholders involve in the Solid waste management: citizens, municipality' officers, private subcontractors and/or public division in charge of solid waste management.

### Web operation features

- Solution optimization with Explorer or Microsoft tools;
- Development tools compatible with Microsoft:
  - Asp.net 2.0;
  - Database SQL;
  - SQL reporting.
- More details to be supply as requested by the customers/distributors.

### Customized and detailed features

- More details to be supply as requested by the customers/distributors.

### RFID technology & wireless data transmission features

- More details to be supply as requested by the customers/distributors.

### Scalable and extensible

- Other languages available on request;
- Other countries than Canada, USA and Mexico for the metadata and governments compliances reporting;
- Introduction of specific algorithm for quantification of carbon credits;
- Customization for each customer specific needs.



## Municipality Client Considerations

### Measurement

1. A rapid way to get field information, without any human intervention;
2. A system that compiles and organizes all information in a logical and an operational way.

### Quality control

1. An operational tool and a solution to cross check the performance of the MSW services offered by the municipality or their subcontractors;
2. A better way to manage citizen's participation in the MSW issues.

## Day in the Life Example

<b>Before</b>	<ul style="list-style-type: none"> <li>▪ No direct measurement of the MSW' management performance</li> <li>▪ Use of general unformatted and inaccurate data from annual or sporadic survey</li> <li>▪ Depend mostly on subcontractor data</li> </ul>	<ul style="list-style-type: none"> <li>▪ An archaic way to control the MSW collection service quality:                             <ul style="list-style-type: none"> <li>▪ Field operation</li> <li>▪ Citizen complaints</li> </ul> </li> </ul>
<b>After</b>	<ul style="list-style-type: none"> <li>▪ Direct and real time data that are electronically supplied by the subcontractor operation site</li> <li>▪ Performance measurement available in real time and through customized report</li> </ul>	<ul style="list-style-type: none"> <li>▪ A direct and efficient tool to obtain field data pertaining to quality service</li> <li>▪ A better and faster way to answer citizen complaints</li> </ul>
<b>Result</b>	<ul style="list-style-type: none"> <li>▪ Municipality productivity gain</li> <li>▪ A system to claim more money from recycling government programs</li> </ul>	<ul style="list-style-type: none"> <li>▪ Municipality productivity gain</li> <li>▪ Better image for municipality and a better way to keep citizens participation</li> </ul>

## Benefits for the Client: the Municipality

1. **To give municipalities the opportunity to make money, in an environmentally friendly way, by measuring in real time the true performance of their solid waste management:**
  1. Give them the tool to prove and to measure their real performance and, by all means, to claim a better \$\$\$\$ part of the government fiscal program for waste recycling;
  2. To give municipalities the operational intelligence needed for the negotiation and control of their waste management contract performance.
2. **To respond to citizen pressure, regarding environment and climate change, and give them a way to channel their concern in real efforts!!!**
  1. To participate at municipal challenge regarding climate change issues.

Contact information: Mr. Martin Clermont – [mclermont@solutionswill.com](mailto:mclermont@solutionswill.com)  
Mrs. Patricia Marchand – [pmarchand@solutionwill.com](mailto:pmarchand@solutionwill.com)